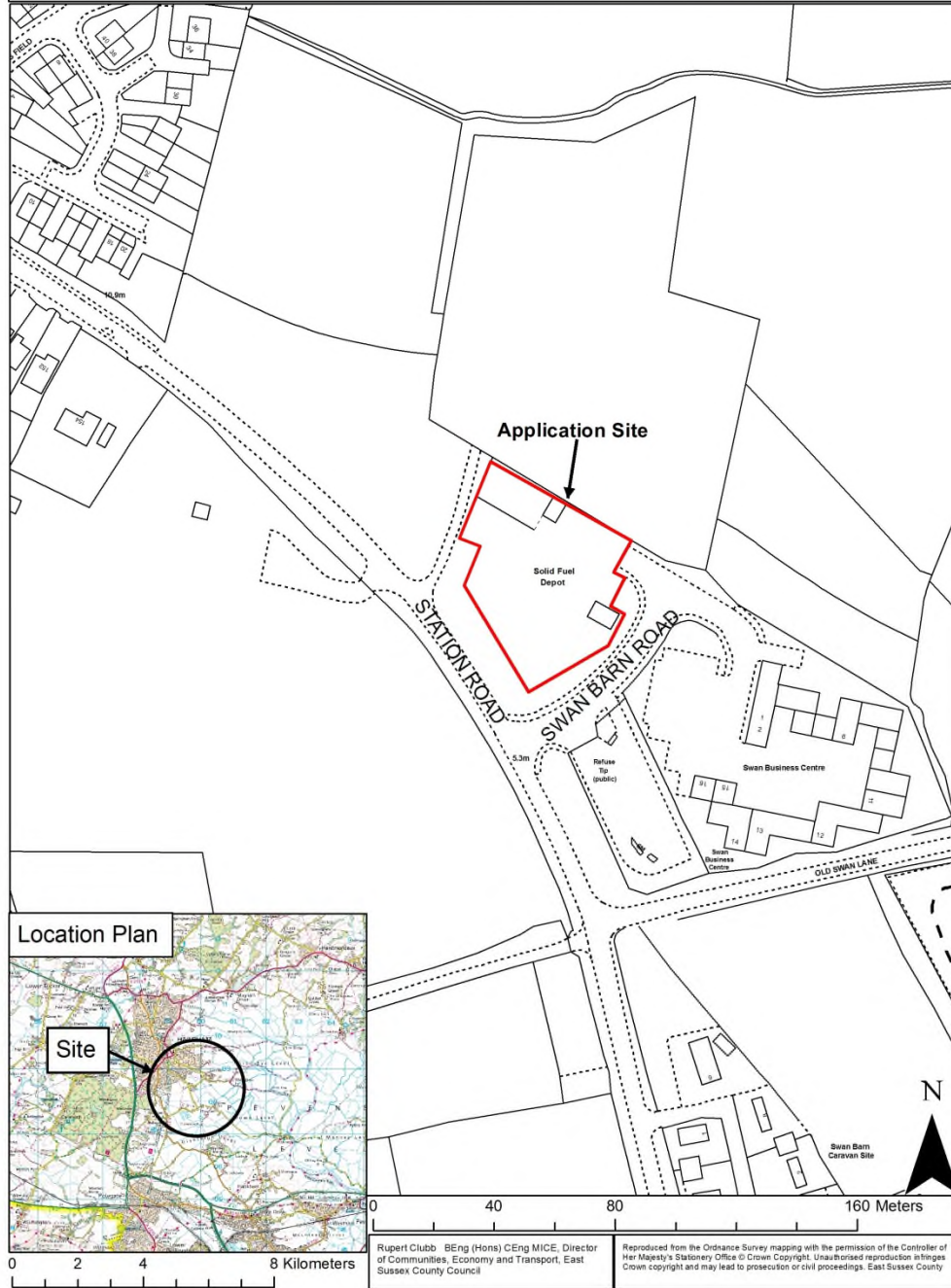


WD/831/CM

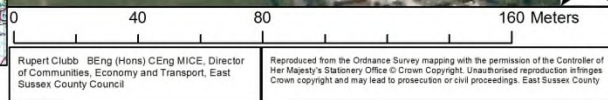
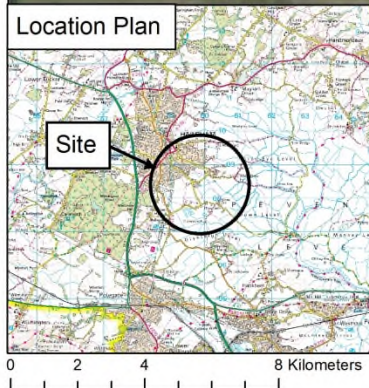
Change of use of coal yard and existing building to a tyre recycling and crumb and bale production facility.

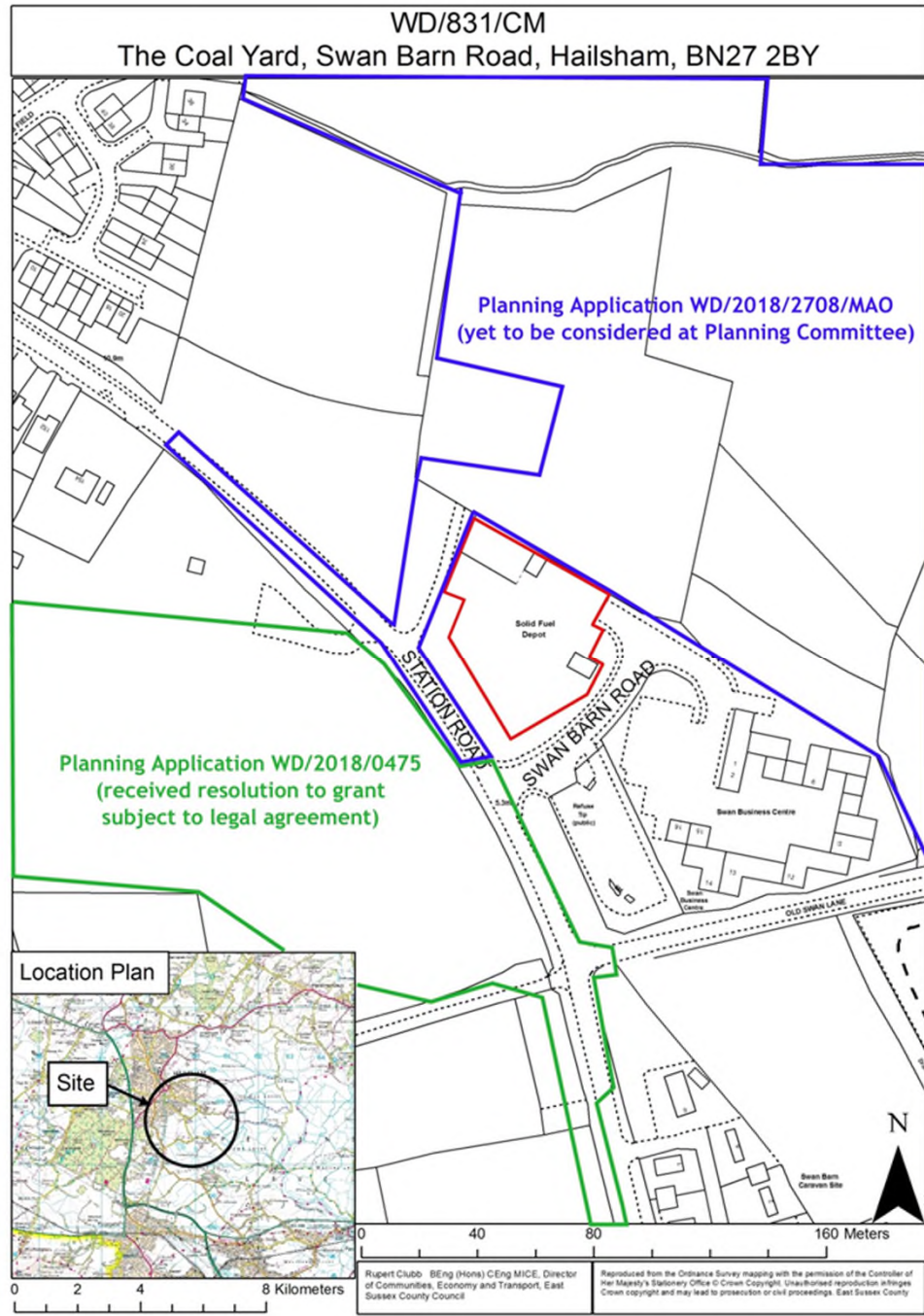
The Coal Yard, Swan Barn Road, Hailsham, BN27 2BY.

WD/831/CM
The Coal Yard, Swan Barn Road, Hailsham, BN27 2BY



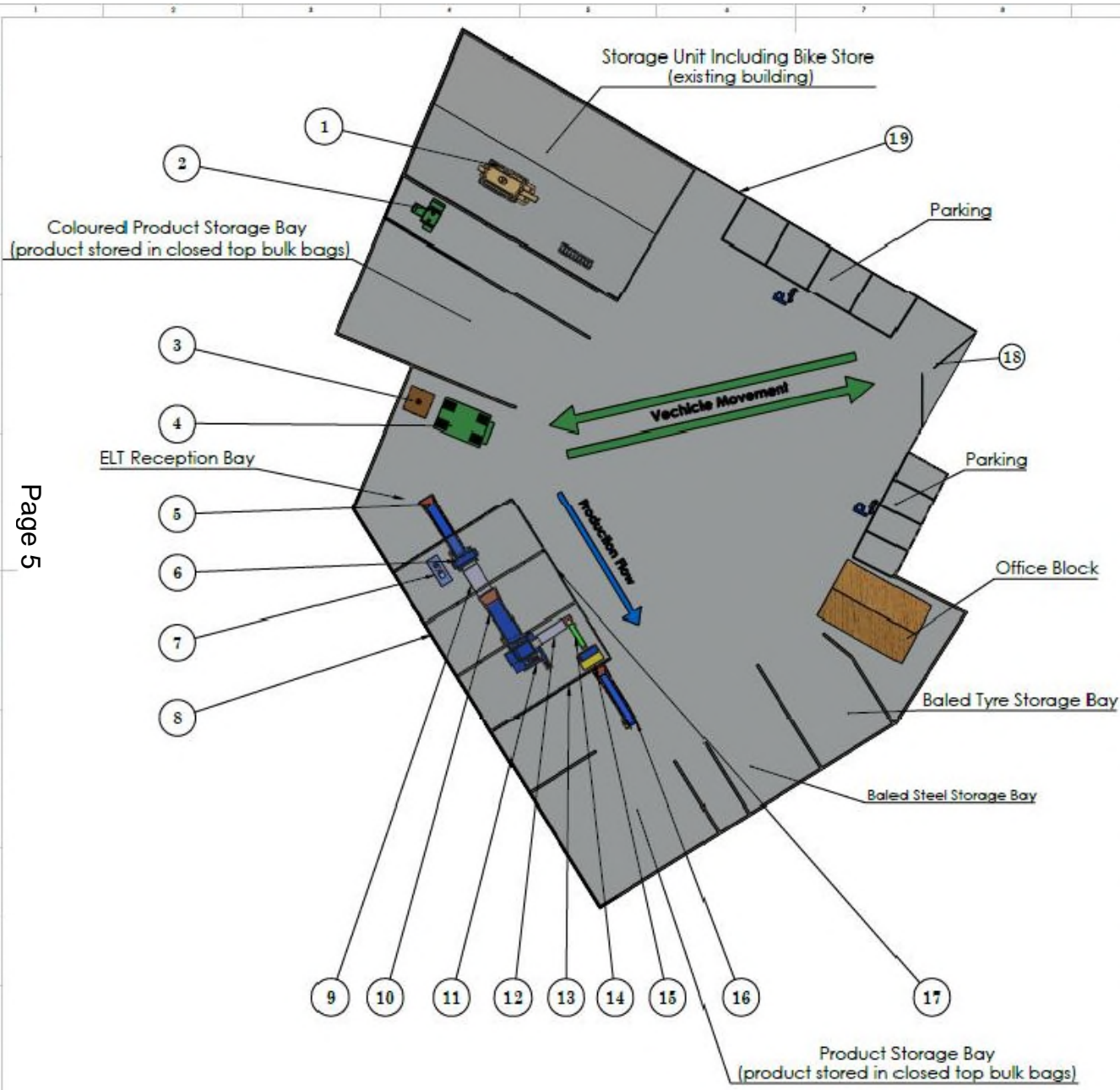
WD/831/CM
The Coal Yard, Swan Barn Road, Hailsham, BN27 2BY





PROPOSED SITE LAYOUT PLAN

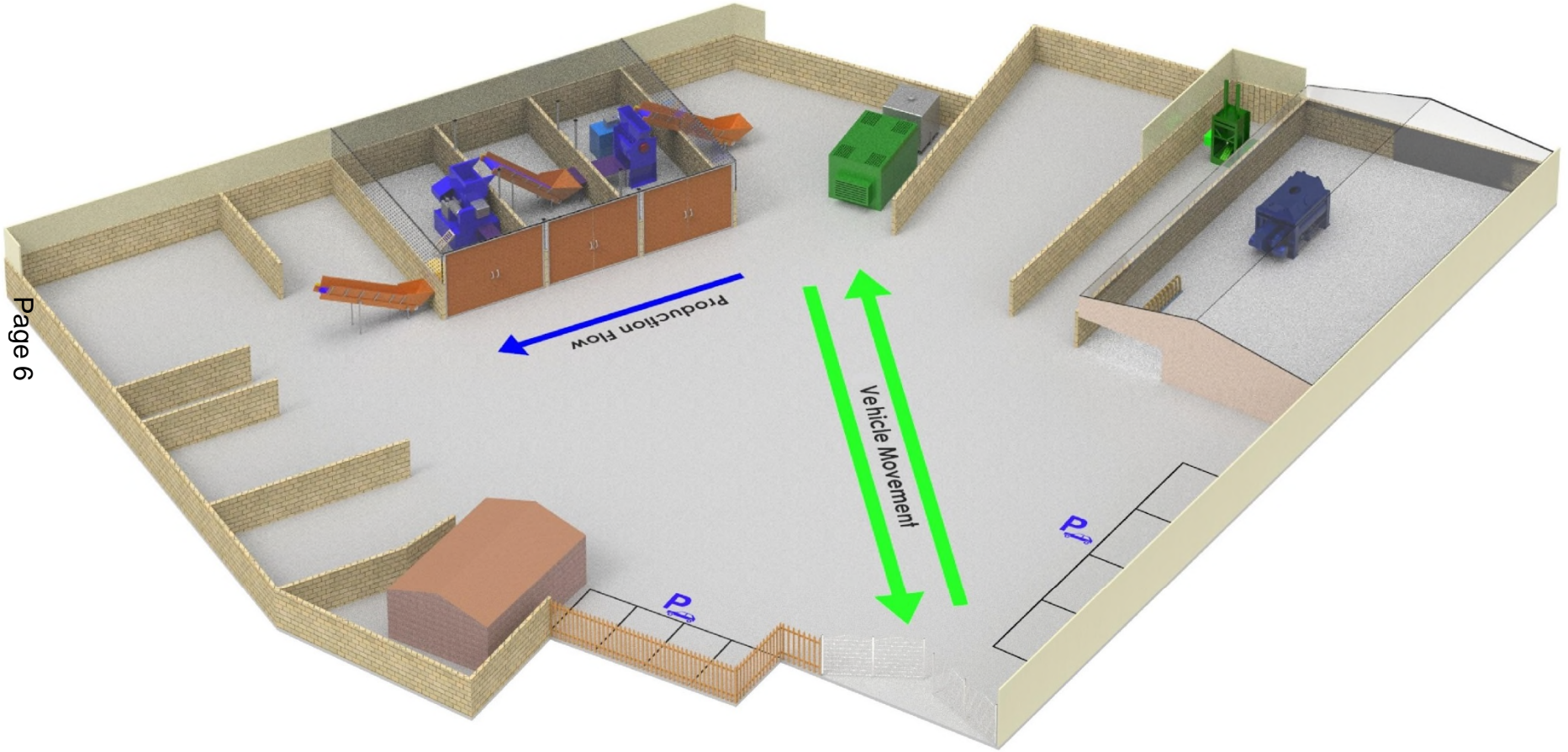
Page 5



Item No	Item	Description
1	Coloured Product Mixer	Stand alone diesel powered mixer used to produce coloured chip product
2	Baler	Hand fed baler to bale steel tyre wire (and tyres as back up)
3	Generator Fuel Tank	Metal self bunded fuel tank holding 4000 Litres of diesel to power generator
4	Generator	Generator housed in a super silent sealed body to provide power to the tyre processing line.
5	In feed conveyor #1	Inclined conveyor to transport whole tyres from ground level to the receiving hopper of the primary shredder.
6	Primary Shredder	Shredder to size reduce whole tyres down to rough shred.
7	Power Pack	Electrically driven motor powering primary shredder
8	Bay Wall & Acoustic Barrier	2.3m high concrete panel wall with acoustic barrier fitted to height of 4.2m at rear.
9	Shaker Table #1	Vibrating table to transport rough shred from primary shredder to in feed conveyor #2
10	In feed conveyor #2	Inclined conveyor (with sides) to transport rough shred from vibrating table to hopper of secondary shredder.
11	Secondary Shredder	Shredder to size reduce rough shred to 20mm rubber chip product.
12	Shaker Table #2	Vibrating table to transport 20mm rubber chip and liberated steel wire from secondary shredder to out feed conveyor #1.
13	Covered Bay (existing)	Bay with canopy to contain secondary shredder operation controlling noise and dust release.
14	Outfeed Conveyor #1	Incline conveyor to transport 20mm rubber chip and steel wire to magnet.
15	Magnet	Steel wire extracted is deposited into a metal collection bin. 20mm rubber product is deposited on to out feed conveyor #2.
16	Outfeed Conveyor #2	Incline conveyor (v shape) to transport 20mm rubber product to bagging area.
17	Extended Enclosure	Steel clad and concrete acoustic enclosure- 12.6m x 17m
18	Site Access	Secure entrance gates.
19	Acoustic Fencing	3.5m Acoustic barrier

Pyrite Industries Ltd, The Coal Yard, Hailsham

SCALE:1:250	A2
Pyrite/Layout/001	









View 4 - View south towards the site office and storage bays where processing line is proposed

Page 10



east

View 5 - View northwest towards the metal sheet building proposed for tyre storage and colouring, and the partially enclosed area proposed for baling



WD/831/CM

Change of use of coal yard and existing building to a tyre recycling and crumb and bale production facility.

The Coal Yard, Swan Barn Road, Hailsham, BN27 2BY.